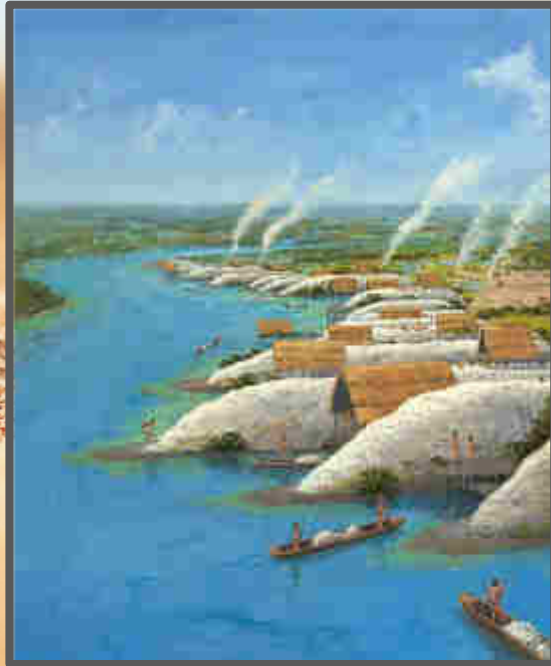
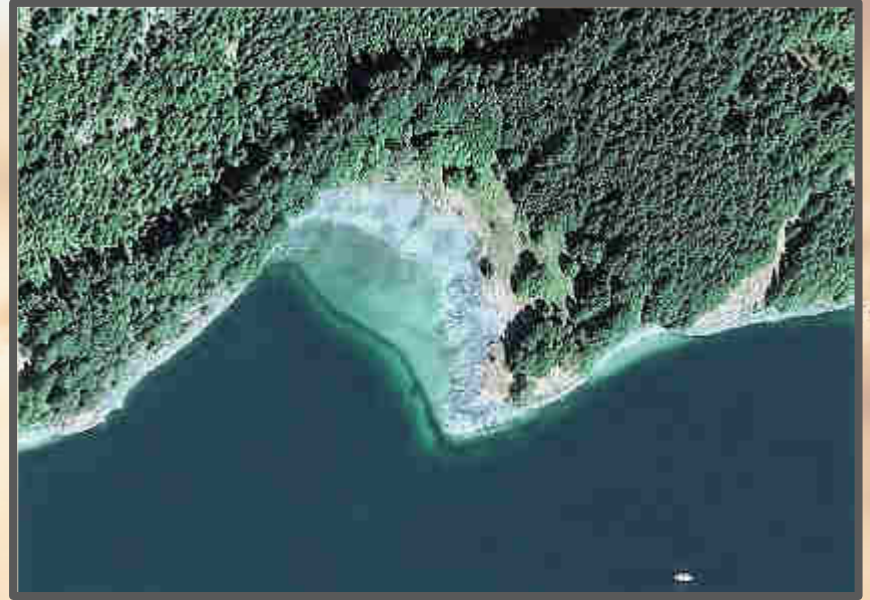


INDIGENOUS REGENERATIVE PRAXIS

PRINCIPLES & STRATEGIES

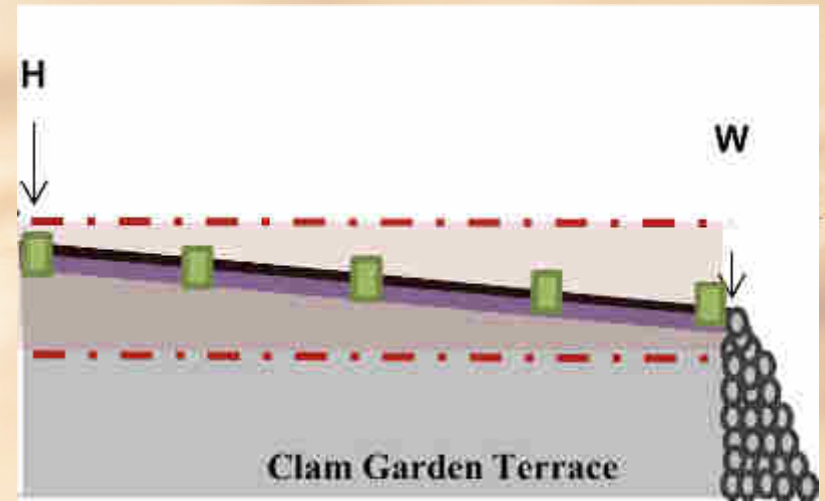
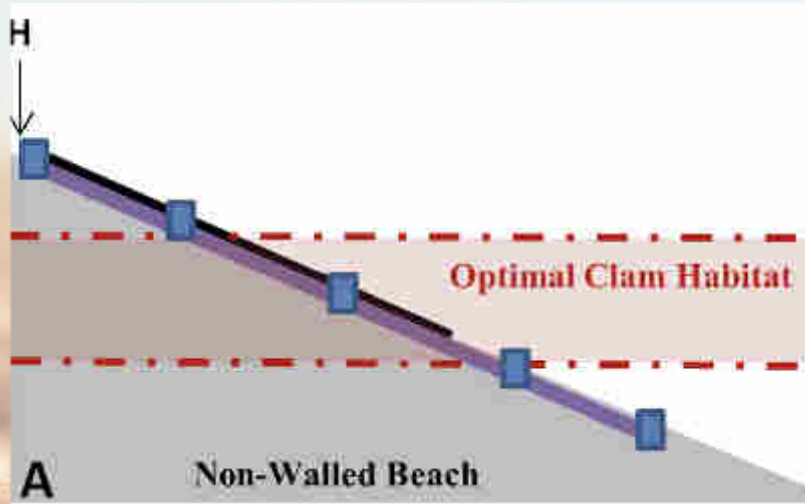


KWAKWAKA'WAKW CLAM GARDENS



Groesbeck, A. S., Rowell, K., Lepofsky, D., & Salomon, A. K. (2014). Ancient clam gardens increased shellfish production: adaptive strategies from the past can inform food security today. *PloS one*, 9(3), e91235.

KWAKWAKA'WAKW CLAM GARDENS



Groesbeck, A. S., Rowell, K., Lepofsky, D., & Salomon, A. K. (2014). Ancient clam gardens increased shellfish production: adaptive strategies from the past can inform food security today. *PLoS one*, 9(3), e91235.

KWAKWAKA'WAKW CLAM GARDENS



Groesbeck, A. S., Rowell, K., Lepofsky, D., & Salomon, A. K. (2014). Ancient clam gardens increased shellfish production: adaptive strategies from the past can inform food security today. *PloS one*, 9(3), e91235.

SHAWNEE CHESTNUT GROVES



SHAWNEE CHESTNUT GROVES



SHAWNEE CHESTNUT GROVES

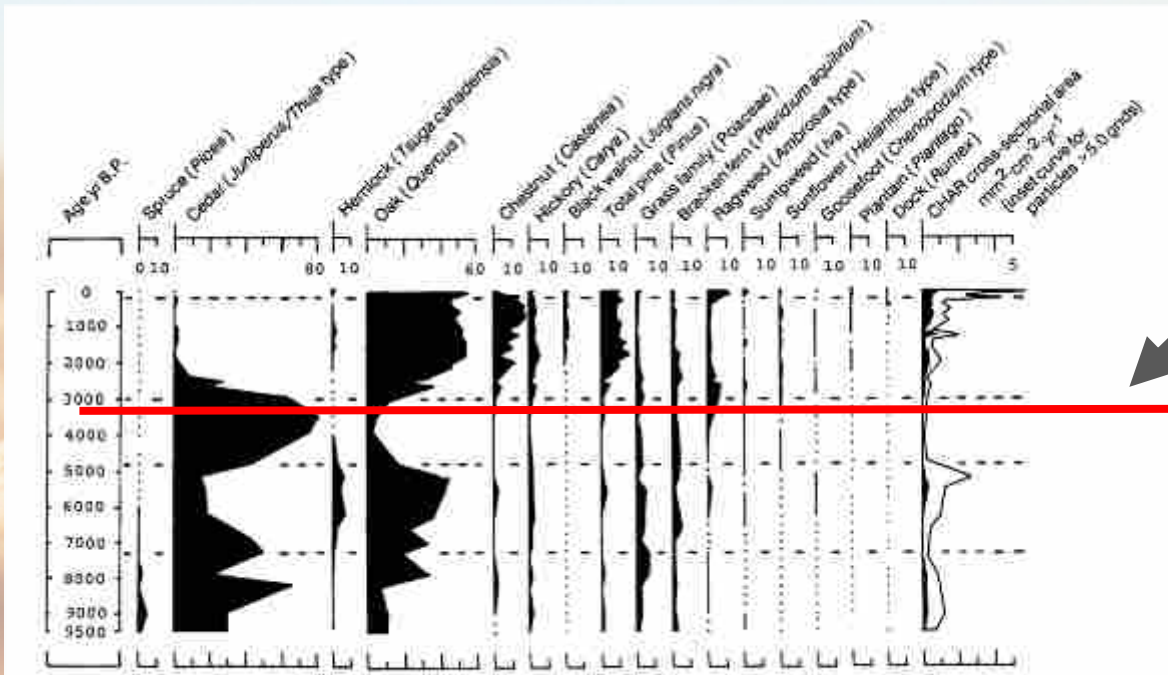


Figure 7. Summary diagram from Cliff Palace Pond for selected fossil pollen taxa and charcoal accumulation rates for cross-sectional area (total charcoal and inset curve for large charcoal particles > 5.0 grids).

Let's inspect this line here

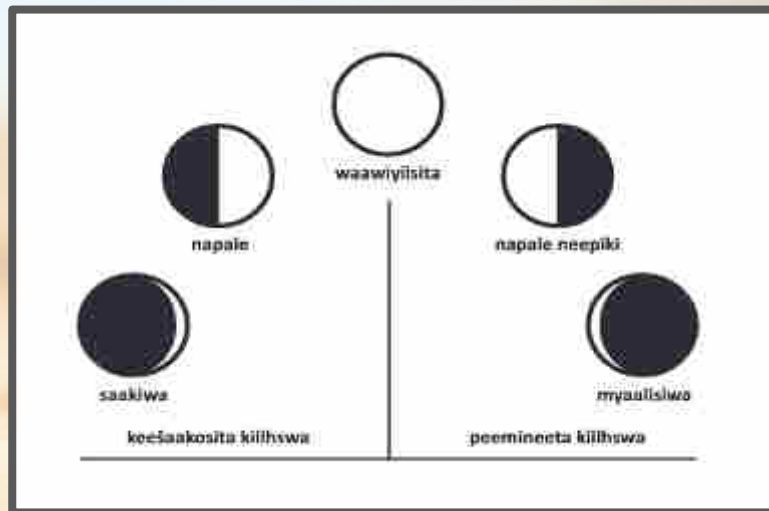


NATIVE AMERICAN GRASSLAND PYRO- MANAGEMENT



“[THE ILLINOIS CONFEDERACY] SHAPED AND ALTERED MUCH OF THIS REGION AS AN ANTHROPOGENIC CREATION. LIKE MANY OTHER INDIGENOUS GROUPS IN NORTH AMERICA, THEIR MOST IMPORTANT TOOL WAS FIRE. BURNING THE PRAIRIES, THEY MADE THE GRASSES HOSPITABLE FOR GRAZERS, AND MANAGED PRAIRIE AS A GAME RESERVE TO MAXIMIZE PRODUCTIVITY (MORRISEY, 2019, P. 56).

NATIVE AMERICAN GRASSLAND PYRO-MANAGEMENT



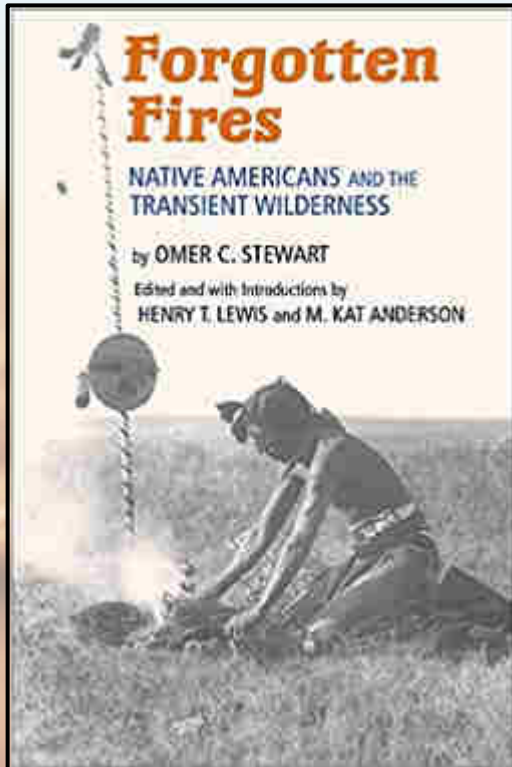
MYAMMIA LUNAR CALENDAR: THE GRASS BURNING MOON

NATIVE AMERICAN GRASSLAND PYRO- MANAGEMENT



“IN SAAŠAAKAYOLIA KIILHWA, WE SEE
FIRE AS SOMETHING THAT RESTORES AND
GIVES NEW LIFE TO THE PRAIRIE. FIRE
HELPS CLEAR THE LAND OF OLD GRASS
AND BRUSH AND OPENS SEED PODS THAT
HAVE FALLEN TO THE GROUND. BECAUSE
OF FIRE, NEW FLOWERS AND PLANTS
EMERGE IN THE SPRING”
(MCCOY ET AL, 2011, P. 60).

AMERICAN GRASSLANDS PYRO-MANAGEMENT



NORWEGIAN HOLOCENE PYRO-MANAGEMENT



“ANTHROPOGENIC BURNING WAS DIFFERENT FROM NATURAL FIRES. THE FIRES SET BY PEOPLE WERE SMALLER AND LESS INTENSE... THEY WERE PREDICTABLE, ALMOST IMMEDIATELY PRODUCTIVE, CREATING MOSAICS IN A COMPLEX PATTERN OF VEGETATION OF BURNT AND UNBURNT PATCHES. BECAUSE THEY REDUCED AVAILABLE FUEL, THEY PROVIDED PROTECTION AGAINST THE DISRUPTIONS OF NATURAL FIRES.”

THE METAPHOR OF THE BIRDBATH



INDIGENOUS REGENERATIVE ECOSYSTEM DESIGN



IREED



IRED

DRIVING VALUES

- Respect
- Reverence
- Reciprocity
- Responsibility
- Relationality/Kincentric Ecology
- Bio-equality

IRED

STRATEGIES

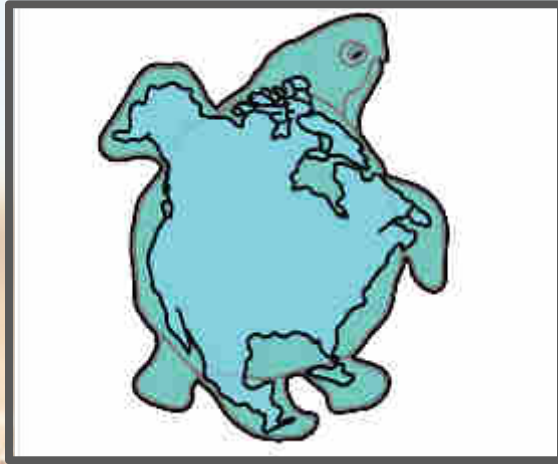
- Habitat expansion
- Work with nature
- Species Curation/Selection
- Augment Foodweb Base to Augment System
- Regenerative disturbance
- Design for forever (not for fiscal quarter)
- Design for biodiversity (not for profit maximization)

IRED

CHARACTERISTICS

- Place-based
- Millennial scale
- Regional scale (not farm but whole ecosystem)
- Local materials
- Human positive
- Ecocentric
- Kincentric
- Ecomimetic (mimic preexisting ecological conditions)

TURTLE ISLAND



A DENSELY POPULATED, EXTENSIVELY
MANAGED CONTINENT

THANK YOU

www.lylajune.com

Instagram: @lylajune

Youtube: Lyla June

Dissertation: “Architects of Abundance”